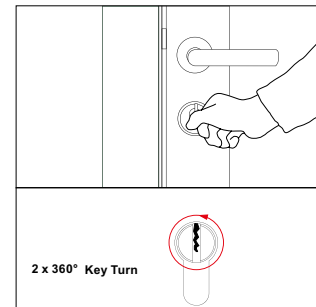


OPERATION OPTIONS FOR MULTI-POINT LOCKS

Key operated door

All the locking elements in the main lock and in the auxiliary lock cases will be operated by a double turn of the key in the main lock.

An key operated door can be equipped with lever or pull handles on the outside.



Lever operated door

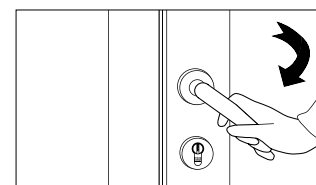
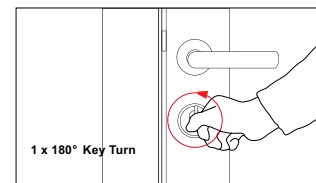
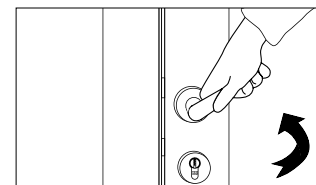
If the handle is pulled up, the locking elements in the auxiliary boxes are locked and the released lever forces draw the door into the seal.

The lever handle then springs back to its starting position and can be unlocked without a key simply by pushing the handle down again.

If the door is to remain securely locked, the lever function can be blocked on both sides by turning the key once and simultaneously locking the main lock.

De- blocking the lever is also carried out by turning the key.

An lever-operated door requires lever handle on the inside and outside.



Automatic door - Key operated door

During closing all locking elements in the auxiliary lock cases will be operated automatically. A double turn of the key will operate the main lock bolt.

An automatic operated door requires pull handles on the outside.

